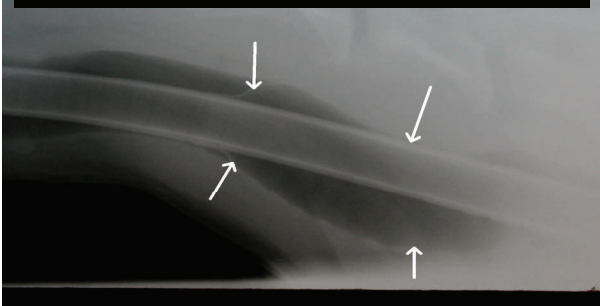


WHY CHANGE to the K-9 Safe-Seal Endo Tube?

X-Ray of traditional inflation cuff tube. Notice overinflation and stretching of trachea.



Have you ever had a patient wake up under anesthesia because the tube leaked?

Do clients complain that their pet is coughing after surgery due to tracheal irritation?

Do you trust that your technicians are properly inflating the cuffs without too much pressure?

Have you ever had a tube accidentally removed with the cuff fully inflated?

Do you wish that you could autoclave your tubes safely?

Are you ever worried about aspiration of fluids when you deflate your tubes for removal?

The Safe-Seal tube was developed to eliminate the problems associated with inflation cuff tubes. No danger of leakage, over pressurization, under inflation, or need for replacement makes this tube safer and extremely cost effective. It also cleanses the trachea upon extubation and is atraumatic to the tracheal mucosa.

This is the next generation intubation tube. When you use the K-9 Safe-Seal Endo tube, you'll come to appreciate what your veterinarian colleagues currently experience: **EASIER SAFER SAVINGS**

K-9 Safe-Seal Endo Tube Benefits:

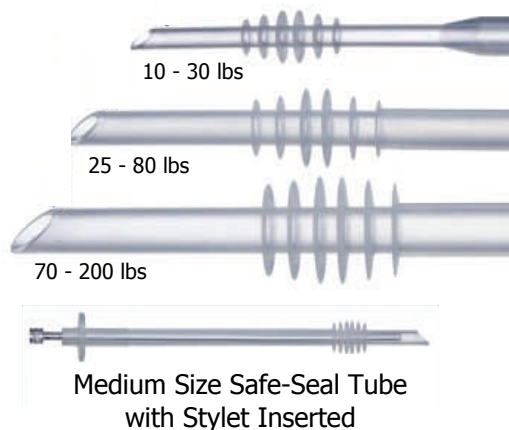
- ☀ Solid one piece construction of medical grade silicone with no moving parts.
- ☀ Durable, resistant to most chemicals and disinfectants. Will last for years.
- ☀ Autoclavable
- ☀ More economical as only 3 sizes are needed for dogs from 10 lbs to 200 lbs. Conventional tubes require 10-12 sizes
- ☀ Transparent - Allowing blood or fluids to be easily seen within the tube.
- ☀ Packaging includes a stylet with each tube.
- ☀ The Y tube adaptor fits snugly but will not seize to the plastic of the Y tube.
- ☀ Faster insertion because no inflation is necessary.
- ☀ Designed with a large user-friendly flare at the Y tube adaptor to facilitate easy removal
- ☀ Tube will harmlessly rotate in the trachea when the patient is rotated during anesthesia, eliminating damage to the tracheal mucosa.
- ☀ Less training is needed for assistants due to the lack of inflation cuff.

More Product Information...

Almost all ET tubes used today depend upon an inflation cuff to seal the tube in the trachea, *except* the Safe-Seal Endo Tube featuring the Blaine Baffle System. This new technology uses a series of six silicone baffles (called Blaines) with carefully engineered pattern and spacing to seal the trachea *without pressure points*. The flexible Blaines allow an "o-ring" effect. The Safe-Seal Endo Tube lies in the trachea and the sealing baffles touch the tracheal wall leaning towards the larynx. Thus, when the patient inspires, the silicone Blaines are sucked against the trachea forming a tight seal. The special design allows passage of pressure exceeding 10-30 centimeters of water in the patient's lungs. If the pop-off valve is accidentally left closed, the excess pressure is released and no harm will come to the patient. If more than 10-30 centimeters of water pressure is desired, the tube is merely withdrawn 1/2" causing the Blaines to flip over and the tip will then face caudally thereby allowing as much pressure to be applied as deemed necessary.

These flexible Blaines are atraumatic to the tracheal surface due to the limited contact of the Blaines. There is minimal contact with the tracheal wall when using the Safe-Seal tube as opposed to the large area of contact of inflation cuff tubes. This means the tube can be left in the same position for extended periods of time. Another advantage is the "squeegee" effect when extubating, by cleansing the trachea clean of any fluids or foreign material present.

The Safe-Seal Endo Tube with the Blaine Baffle System eliminates dangers of deflation or over inflation. The standard tubes used today are constructed of rigid, curved plastic. The shape and rigidity forces the tip of the tube against the tracheal wall when inflated, causing a point of pressure. The Safe-Seal tube's Blaines keep the tip of the tube centered in the trachea. It is ultimately safer to use and can cause no damage to the trachea.

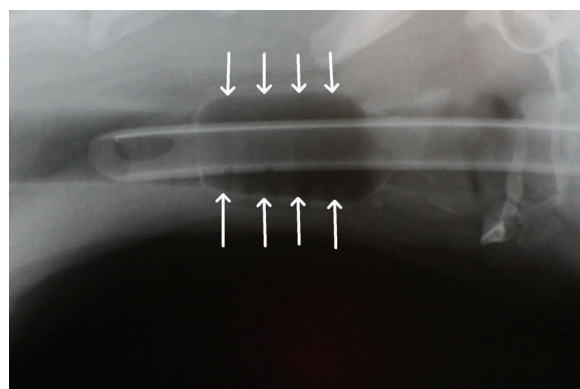
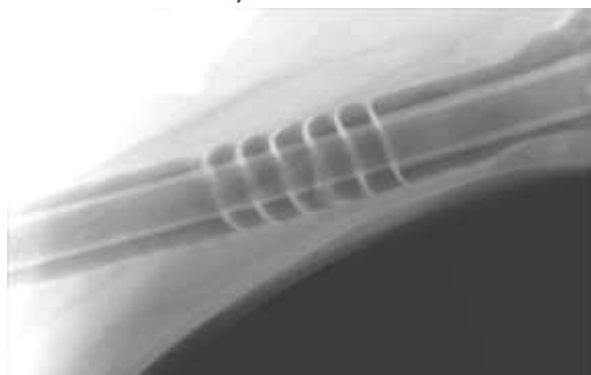


There are 3 sizes available!
10 - 200+ lbs
Each Tube comes with a Stylet



Blaine Baffle System

The K-9 Safe-Seal Endo Tube with the Blaine Baffle System.



Traditional inflation-cuff endotracheal tube. Notice extensive contact with tracheal wall, with risk of causing pressure necrosis if over inflated.